

State of Wyoming Corner Record

(In compliance with the *CORNER PERPETUATION AND FILING ACT*, Wyoming Statutes, 1997, Section 33-29-140, et seq., and the Rules and Regulations of the Board of Registration for Professional Engineers and Professional Land Surveyors)

Reverse side of this form may be used if more space is needed.

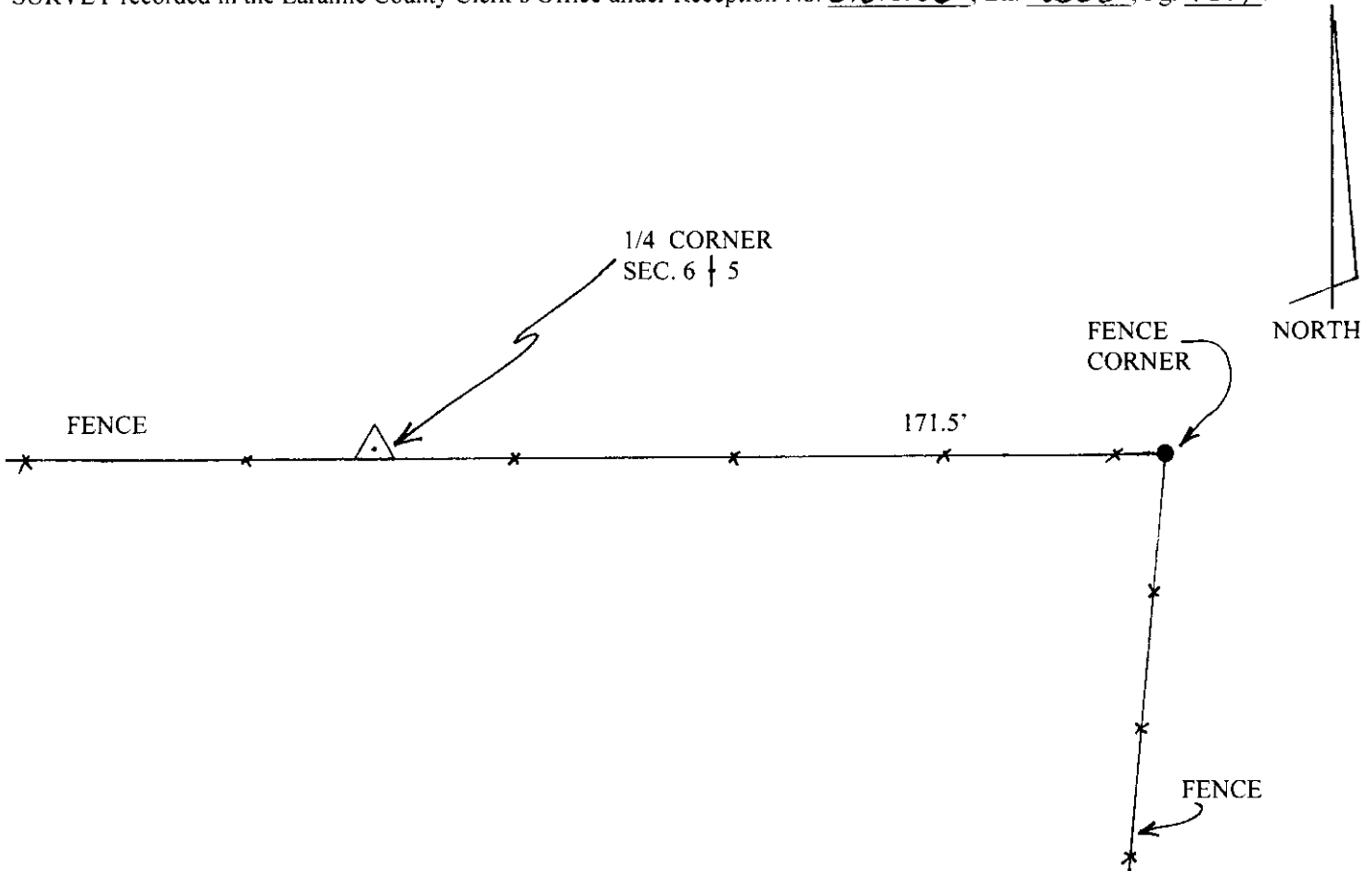
Record of original survey and citation of source of historical information (if corner is lost or obliterated). Description of corner monumentation evidence found and/or monument and accessories established to perpetuate the location of this corner. Sketch of relative location of monument, accessories, and reference points with course and distance to adjacent corner(s) (if determined in this survey). Method and rationale for reestablishment of lost or obliterated corner.

The General Land Office Survey for the interior subdivision of Township 12 North, Range 65 West, 6th P.M. completed by E.D. Bright under contract dated Aug. 10, 1868, survey completed Nov. 28, 1868, and approved by the Colorado Surveyor General on Jan. 25, 1875; presently recorded in the office of the U.S. Bureau of Land Management, Wyoming.

RECORD: Quarter Corner for Sections 5 and 6 (Vol.59 1876, Pg.184): "Set sandstone stone 15 x 12 x 9 for 1/4 sec. cor."

NOT FOUND: SEE - SURVEYOR'S REPORT on following page.

SET: 3" diameter aluminum survey cap on a 3' long No.5 rebar, properly stamped in accordance with the BLM Manual. See RECORD OF SURVEY recorded in the Laramie County Clerk's Office under Reception No. 616226, Bk. 2338, Pg. 1331.



Date of Field Work: APRIL 2013

Office Reference: _____

CROSS INDEX DIAGRAM

	1	2	3	4	5	6	7	8	9	10	11	12	13	14	15	16	17	18	19	20	21	22	23	24	25
A																									
B																									
C																									
D																									
E																									
F																									
G																									
H																									
J																									
K																									
L																									
M																									
N																									
O																									
P																									
Q																									
R																									
S																									
T																									
U																									
V																									
W																									
X																									
Y																									
Z																									

Land Surveyor / Firm / Address

John J. Studley, LS No. 4828

Studley Land Surveying, PC

615 West Dale Blvd.

Cheyenne, Wyoming 82009

Telephone: **307-287-4755**

This corner record was prepared by me or under my direction and supervision.
SEAL & SIGNATURE



Corner Name: Quarter Section corner common to Sections: 5 and 6 T 12 N, R 65 W, 6th P.M. Cross-Index No.: C5
SBRPEPLS/PLSW: March 1994; PLSW



RECORDED 5/24/2013 AT 2:02 PM REC# 616229 JK# 2338 PG# 1335
DEBRA K. LATHROP, CLERK OF LARAMIE COUNTY, WY PAGE 1 OF 2

SURVEYOR'S REPORT

The original GLO stone monument was not found.

I reestablished the Closing Corner for Sections 5 and 6 on the Third Standard Parallel using the found Boat Spikes (BS) referenced in the Laramie County Engineer's resurvey of the Third Standard Parallel and recorded in County Road Book No. 51, Pages 88 through 117 (see page 112).

In said CR 51, on page 92 I found a specific reference with distance tie to the "1/4 stone in place" for the subject quarter corner common to Sections 5 and 6, from the reestablished Closing Corner for Section 5 and 6. The distance from said Closing Corner to the said Quarter Corner is 2,743.7' (2711.7 plus 32).

When I measure on line between the reestablished Closing Corner (A5) and the reestablished Section Corner (E5), the record distance of 2,743.7', the temporary point fell within 2' of an existing east-west fenceline. This is collateral evidence of good latitudinal position.

There is an existing fence corner located 171.5' easterly of this temporary point, which does not appear to be good evidence of the longitudinal position of the original corner. There are three large sandstones located in close proximity of this fence corner, but I found no evidence of chisel markings upon any of these stones.

CONCLUSION: The record measurement recorded in CR 51, Pg.92 from the reestablished Closing Corner to within 2' of an existing east-west fenceline appears to be good collateral evidence of the latitudinal position for this obliterated corner. In addition, the reestablished Closing Corner (A5) and the reestablished Section Corner (E5) provide good on line longitudinal position for this obliterated corner. In my professional opinion, this collateral evidence provides good repositioning of the original corner beyond reasonable doubt.

